

Manual for creating content for on-demand classes
using CCS (Contents Creation Studio)

■What is CCS?

Contents Creation Studio allows you to register a variety of knowledge content, such as videos, documents, social media materials, etc., and allows you to create and register your own content, such as recording a real-time presentation.

This is a content creation/management platform that allows you to centrally manage and easily query a large number of contents and distribute/share them for various purposes.

■Steps from preparation to release of class content

Below is an example procedure for the most standard pattern of combining PowerPoint document and camera image.

- ① Create a file of class slide materials (PowerPoint).
- ② Build an environment for content creation on your computer.
- ③ Load the PowerPoint data created in advance into the application and start recording.
- ④ Publish created class content to the class support system LMS (Waseda Moodle).



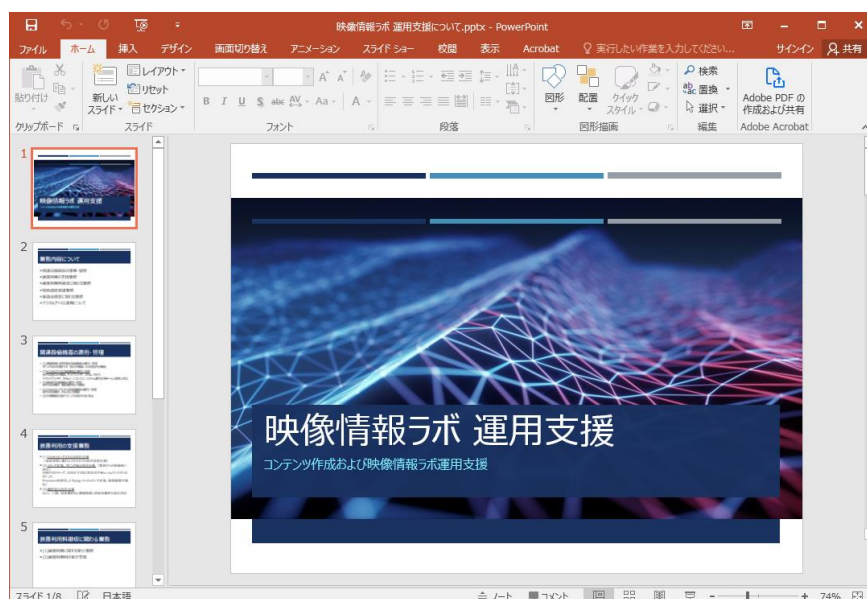
① Prepare a PowerPoint document

Create the materials by PowerPoint in the same way as it is used in classroom classes.

※The approximate length of one content description is recommended to be within 15 minutes; if it exceeds 15 minutes, it is recommended to break it up into multiple parts.

※Tips! The newscaster seems to be aiming for around 300 words per minute.

※Due to the limitations of the application, PowerPoint animations are limited to the effects such as "appeal".



Attention! Please pay attention to the copyright and portrait rights. These rights are not the same as in the classroom classes.

For more information, please refer to the "On-Demand Class Implementation Guide".

② Application Deployment

In this chapter, we will walk you through the application deployment process, assuming that you are using ReadyStream Producer for recording.

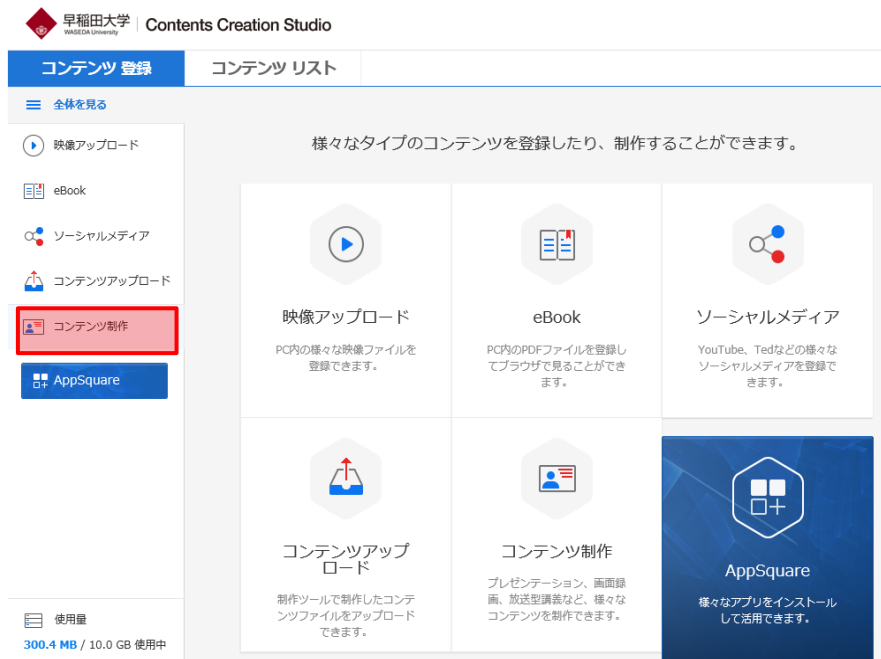
1. Log in to MyWaseda.
2. From the left side menu, click on "Content Creation" → "Contents Creation Studio".



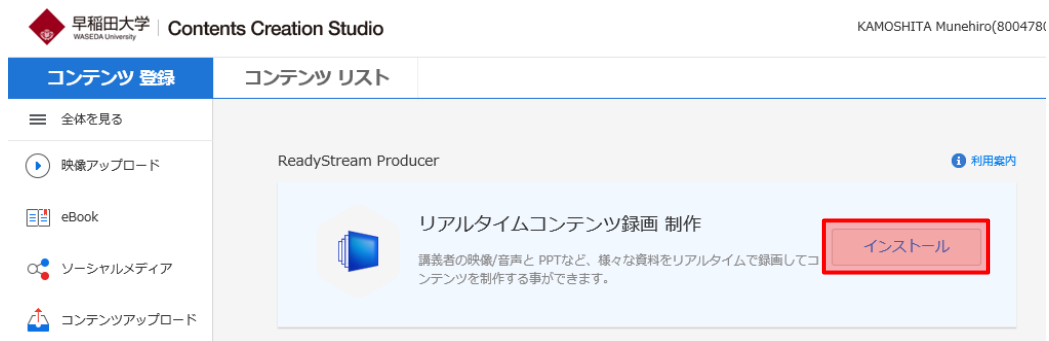
3. From the Contents Creation Studio page, click "Go to My Space".



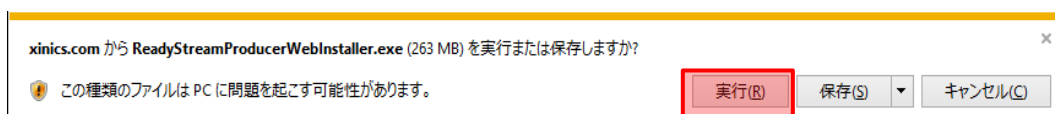
4. Click "Create Content" on the "Content Registration" screen.



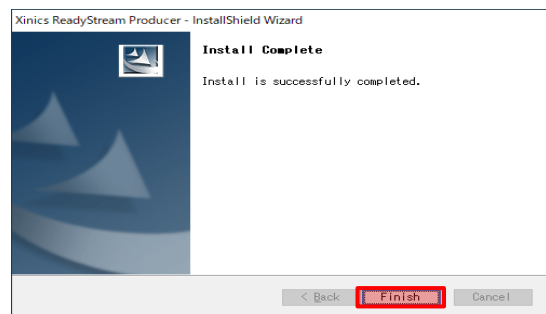
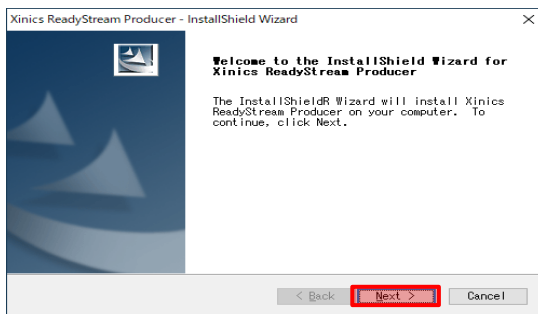
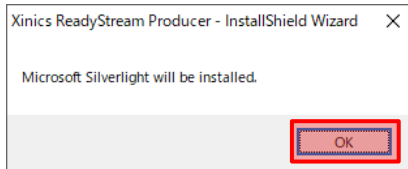
5. Install ReadyStream Producer.



Follow the on-screen instructions to proceed the installation.



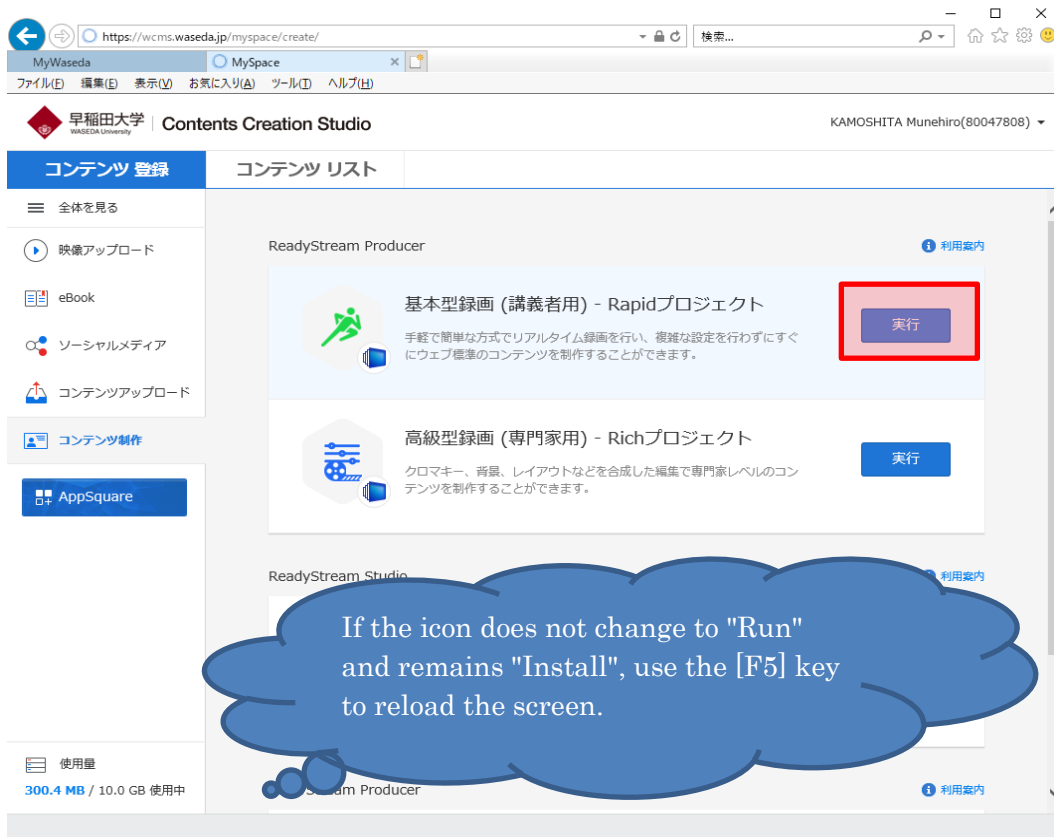
6. Install Silverlight.



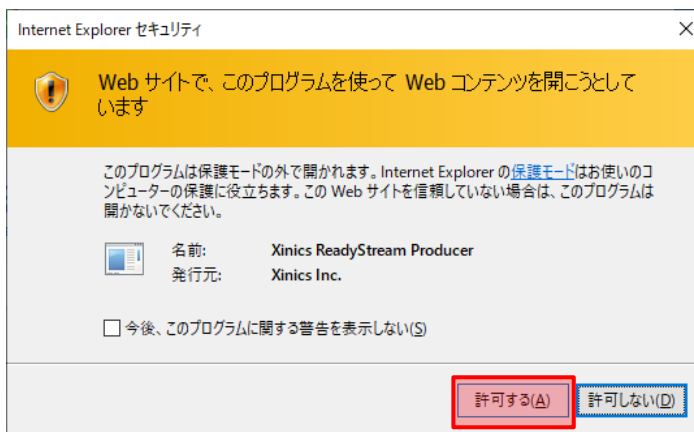
③ Recording of content and preparation for publication.

This chapter describes the steps for recording and preparing content for publication using ReadyStream Producer.

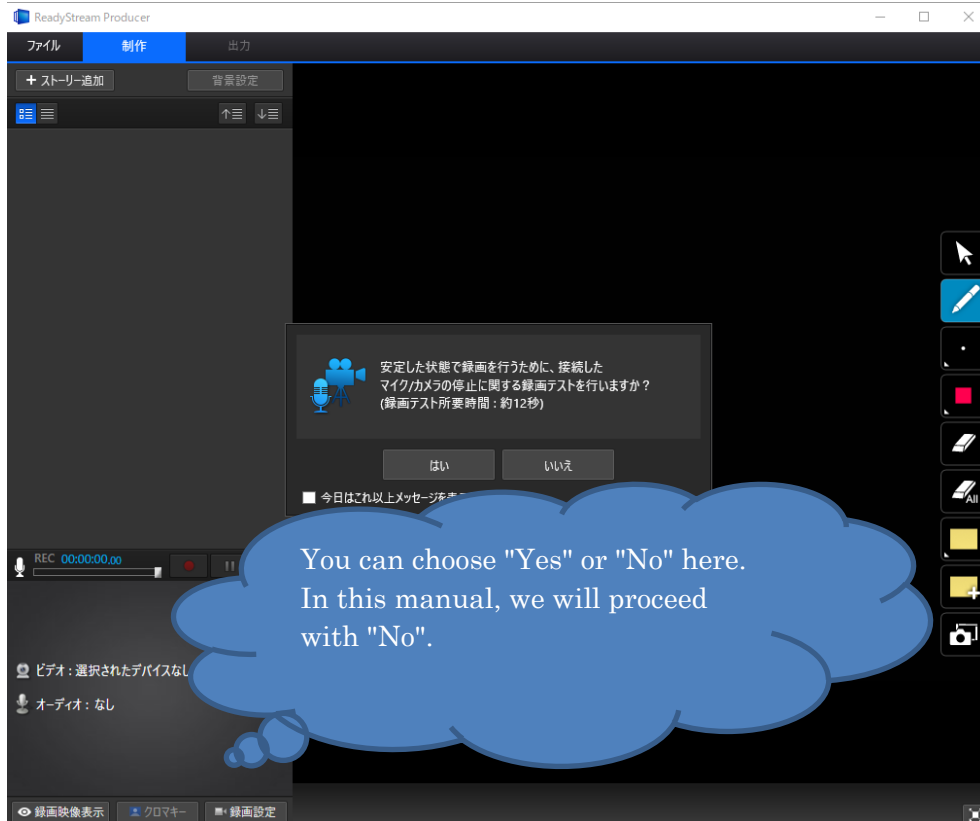
1. Launch the ReadyStream Producer.



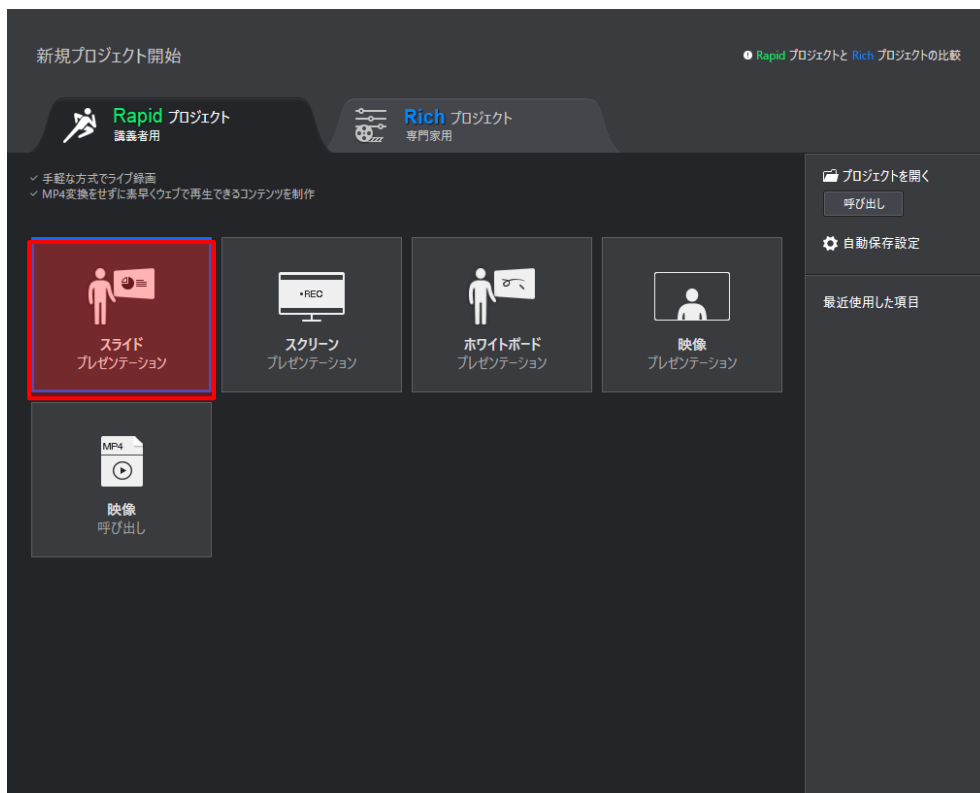
Select "Allow" to proceed.



2. Get ready for recording in ReadyStream Producer.



Click on "Slide Presentation".



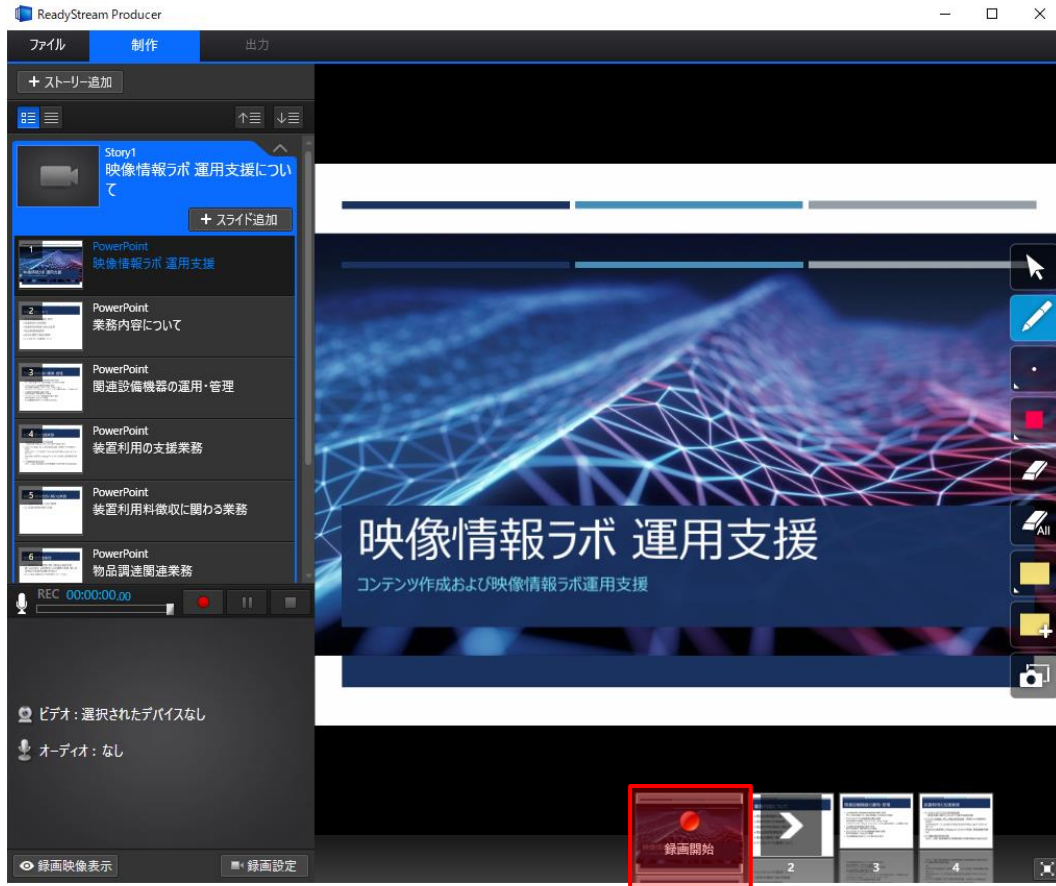
Select the type of recording, "Audio" or "Video".



Select the file of the slide material (PowerPoint).



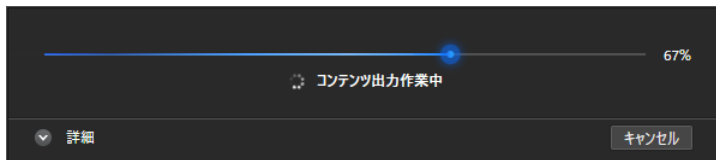
3. Start recording with ReadyStream Producer.



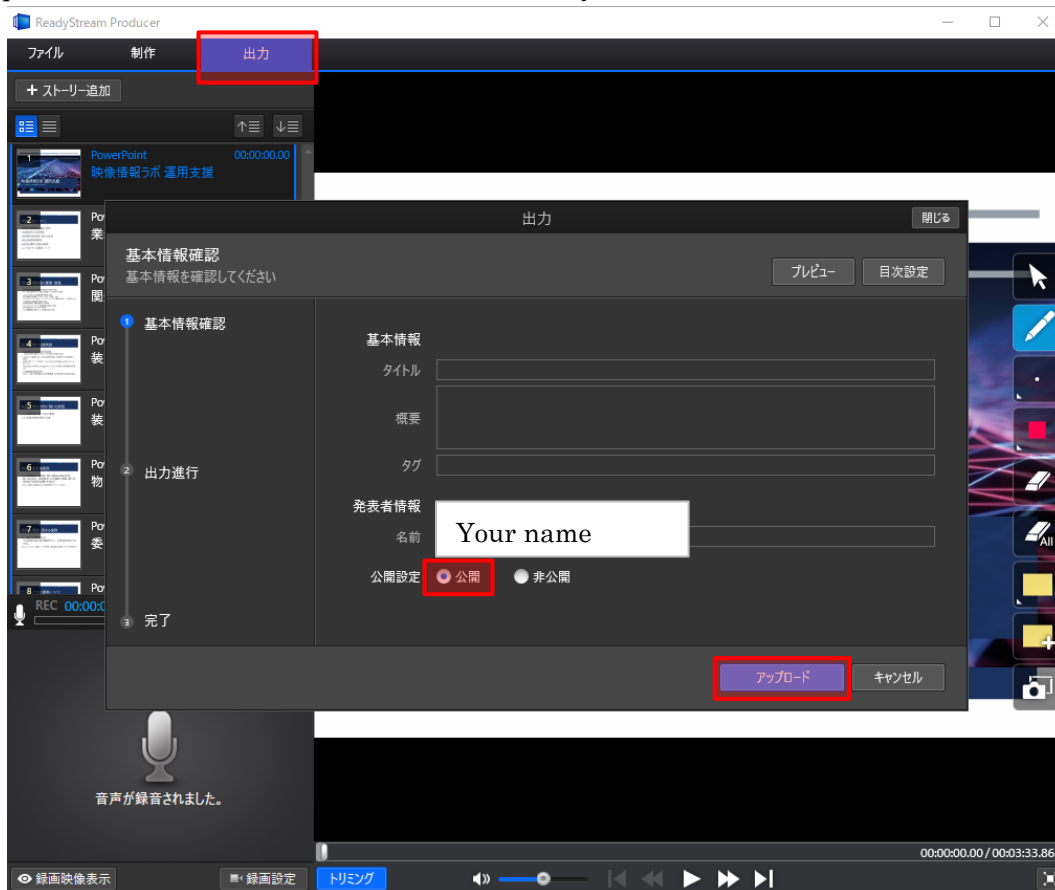
When you click "Start Recording", the countdown will start with "1, 2, 3" and your face will be displayed at the bottom left of the screen (if you selected "Video" on the previous page).



If you selected "Audio" on the above screen.



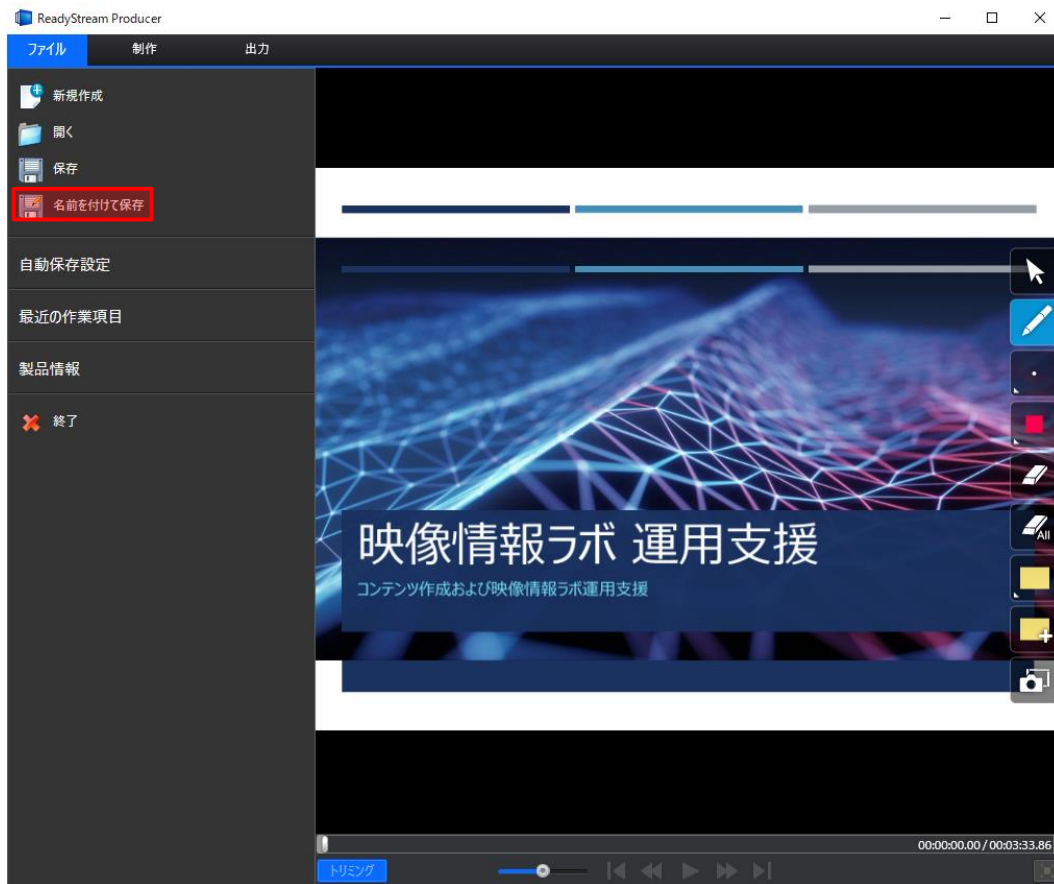
4. Upload and save the content recorded on ReadyStream Producer.



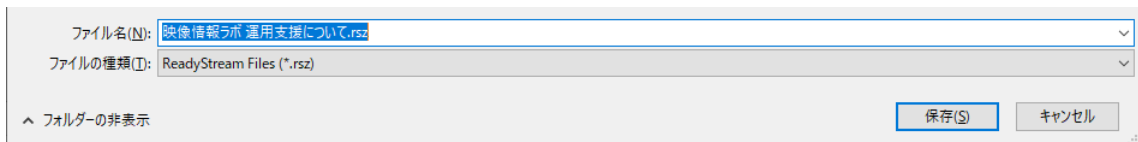
Output (upload) of the video content will start.



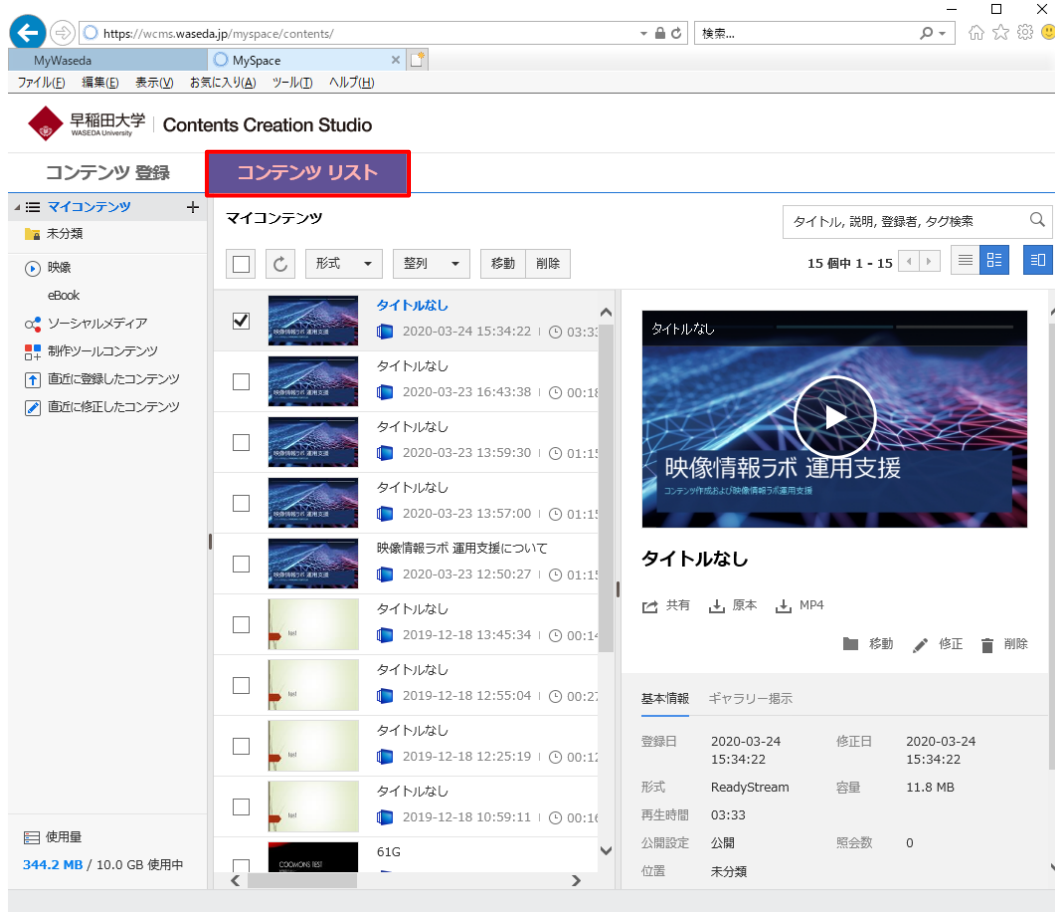
5. Back up video content created with ReadyStream Producer to a local disk.
Please save the file that you have created just in case.



It will be saved in the file format ".rsz".



6. Check the video content you have uploaded.



If you click "Share" on the above screen, a URL for sharing will be issued.

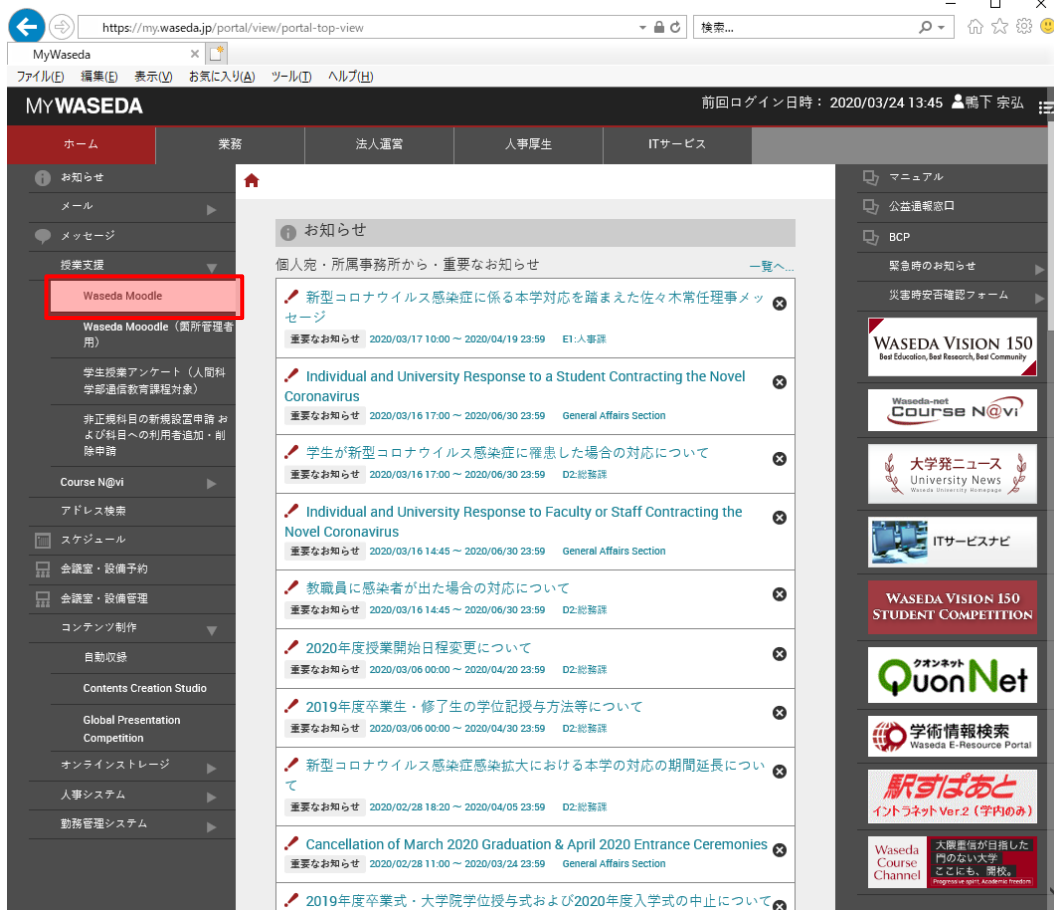


Now that you've created your video content, you can move on to the next page.

④ Publish video content on the class support system LMS (Waseda Moodle)

This chapter explains how to publish video content created by ReadyStream Producer on the class support system LMS (Waseda Moodle).

1. Log in to MyWaseda and click on "Waseda Moodle" from "Learning Support" on the left side menu.



2. Choose a course to publish your content.



3. Click "Start Edit Mode".



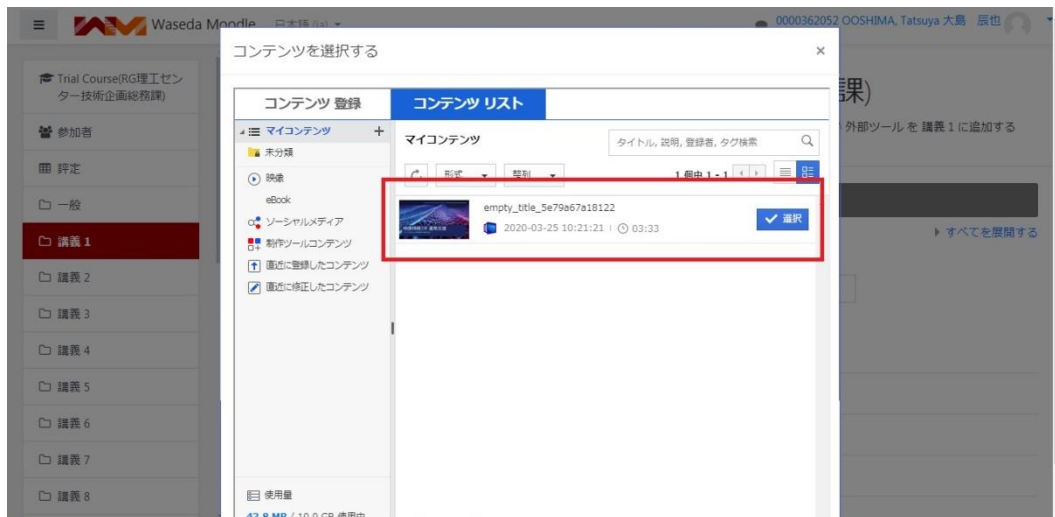
4. Click on "Add an activity or resource".



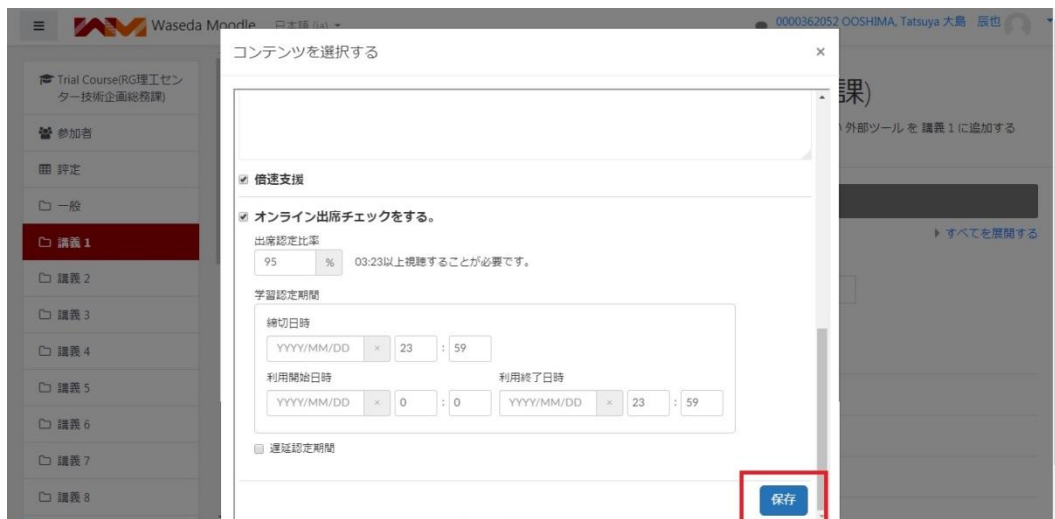
5. Select "60_CCS" and click "Add".



6. Select the content you uploaded in ReadyStream Producer from the list.



7. Set the publication date of the content, etc., and click "Save".



8. The title of the content creation will be displayed. Change the title if necessary.



9. Click on "Save and Return to Course".



10. Confirm that the content is registered in the course and click "Exit Edit Mode".



This is the end of publishing to Waseda Moodle. Thank you.

== Contact ==

Waseda University
Media Design Laboratory

TEL:03-5286-3078

Mail:mdl-staff@list.waseda.jp